

# GÜCÜNÜ BİLGİDEN ALIR

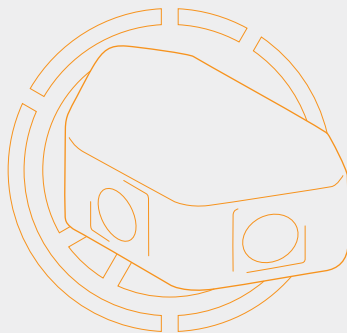


Lightweight  
Low Power

Electro Optic  
Systems

# DVS<sup>120</sup>

**INFRARED  
CAMERA**





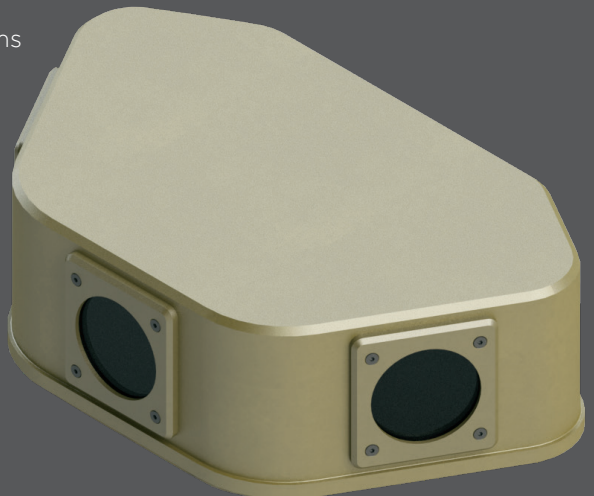
# DVS<sup>120</sup>

ALTAY Infrared Camera



## GENERAL

- Improves survivability and mission capability by providing drivers with wider fields of view as well as the elimination of blind spots to safely navigate through dust, sand, haze, smoke, light fog and the blackest night
- Ability to see both sides of the road
- High range performance
- Advance image processing algorithms
- Low power consumption
- Compact size
- Low weight



## SPECIFICATIONS

### Array Specifications

Array Type	Uncooled microbolometer
Detector Pitch	17 $\mu\text{m}$ x 17 $\mu\text{m}$ ;
Spectral Band	8 $\mu\text{m}$ to 14 $\mu\text{m}$
Resolution	640 (Horizontal) x 480 (Vertical)
Sensitivity (f#1.0, 300 K)	< 50 mK; < 30 mK (optional)
Pixel Operability	> 99.5 %

### Optical Specification

FOV (one camera, horizontal)	44° ( $\pm 10\%$ )
EFL	14.2 ( $\pm 10\%$ )
f/#	1.2
Focus Type	Fixed focus; Athermalized
Focus Range	0.6 m to infinity
Coating on the Exterior Surface of Window	Hard Carbon
Coating on the Interior of Window	Anti Reflective (AR)

### Imaging Performance

Frame Rate	25 Hz [CCIR (PAL)]
Time-to-image	< 2 sec
Video Latency	Analog < 60 ms; Digital < 100 ms
Digital Zoom	X1, X2, X3, X4, X8
Digital Zoom Continuous	From X1 to X8 with 0.02 steps
Noise Cancellation	Adaptive Temporal and Spatial Noise Cancellation
Detail Enhancement	Edge Aware Adaptive Digital Detail Enhancement
Image Enhancement	Plateau-based Adaptive Histogram Equalization / Linear / Manual
Color Palette	Up to 8 different palettes
Live Calibration	With Shutter (periodic or externally controllable)

### Interfaces

Connector	MIL-DTL-38999, Series 3 (3 connectors)
Communication	RS-232, Ethernet
Power	MIL-STD-1275E compatible
Power Input Voltage	24V
Maximum Power Consumption	< 20W
Digital Video Output	Parallel Video 1.8 V <b>LVC MOS</b> (8-bit data, vsync, hsync, pixclk), Ethernet (Optional)
Analog Video Output	PAL or NTSC
GPIO	8 pins 1.8 V <b>LVC MOS</b> (Configurable with respect to customer requirements)
External Trigger	Yes (controlled with 1 GPIO)

### Physical Properties

Maximum Weight	3000 gr
Maximum Dimensions (WxLxH)	200 mm x 280 mm x 145 mm

### Environmental Conditions

Working Temperature	[-32 °C, +55 °C]
Storage Temperature	[-40 °C, +71 °C]

### Range Performance\*

Target (2.3 m x 2.3 m)	<b>Detection:</b> 1400 m <b>Recognition:</b> 370 m <b>Identification:</b> 180 m
Target (1.8 m x 0.5 m)	<b>Detection:</b> 500 m <b>Recognition:</b> 120 m <b>Identification:</b> 60 m

\* **DRI** values shown are nominal values and should be used as an estimation. Exact **DRI** calculations depend on a wide variety of conditions.

